

TikiLiveCD

(ca) [TikiLiveCD](#) ca  [TikiLiveCD](#) es

There are several ways of trying Tiki CMS/Groupware on a CD which contains everything you need to boot your computer from CD, and let you go directly to using your own installation of Tiki.

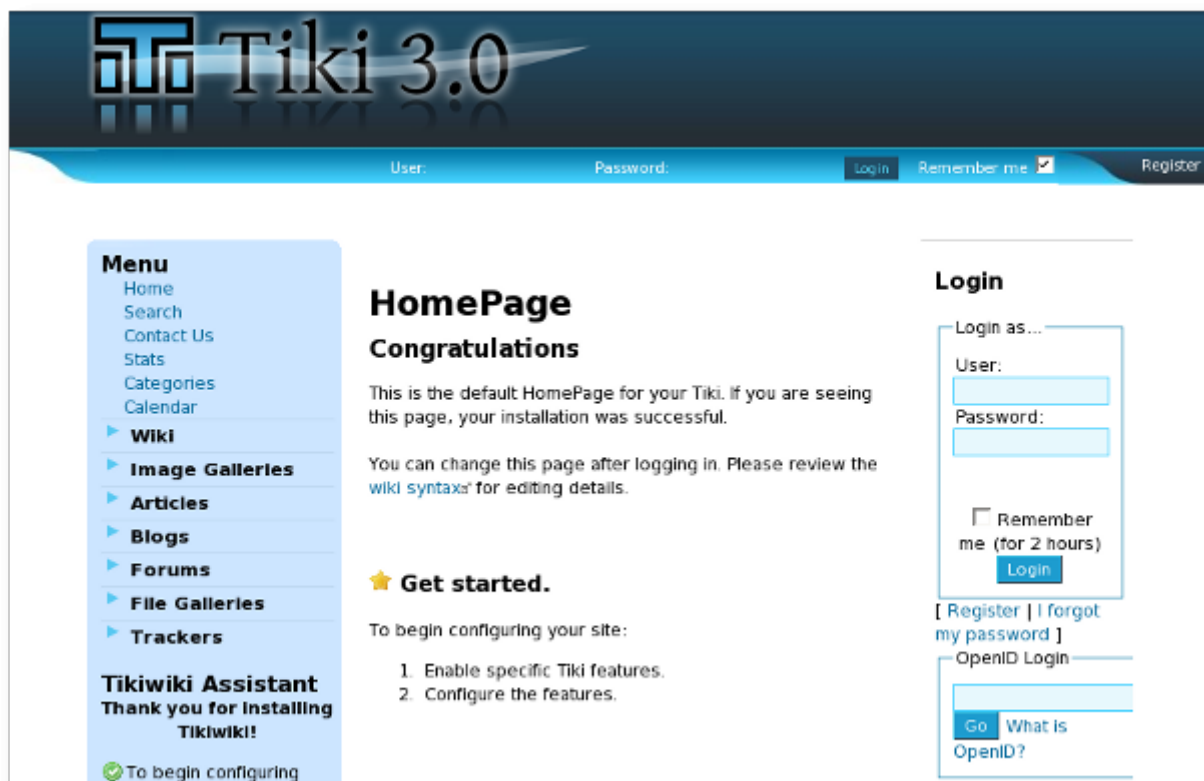
The most updated one is "Slax Tiki Live CD" (see below), which can also be converted to an [UsbTiki](#), if desired. There is also KnoppixTiki, even if it is much more outdated.

Slax-Tiki Live CD

A new version 0.5 including a Tiki 3.0 beta1 (March 3rd, 2009) is here. In addition, subversion is installed so it will be very easy to upgrade to any further version from within the Live CD itself through getting the proper branch from the repositories. See dev:[Download](#) for more details.



ftp://ftp.rediris.es/mirror/gclub/Slax-TikiLiveCD_v0.5a.iso (432 Mb)
alternative download server



Bonus: See the video showing how it was upgraded from a previous TikiLiveCD!

```
{FLASH(movie="http://blip.tv/play/AfGRfpSeVw", width="816", height="622",
allowscriptaccess="always", allowfullscreen="true", quality="high")}{FLASH}
{flash movie="http://blip.tv/play/AfGRfpSeVw" width="816" height="622" allowscriptaccess="always"
```

```
allowfullscreen="true" quality="high" }
```

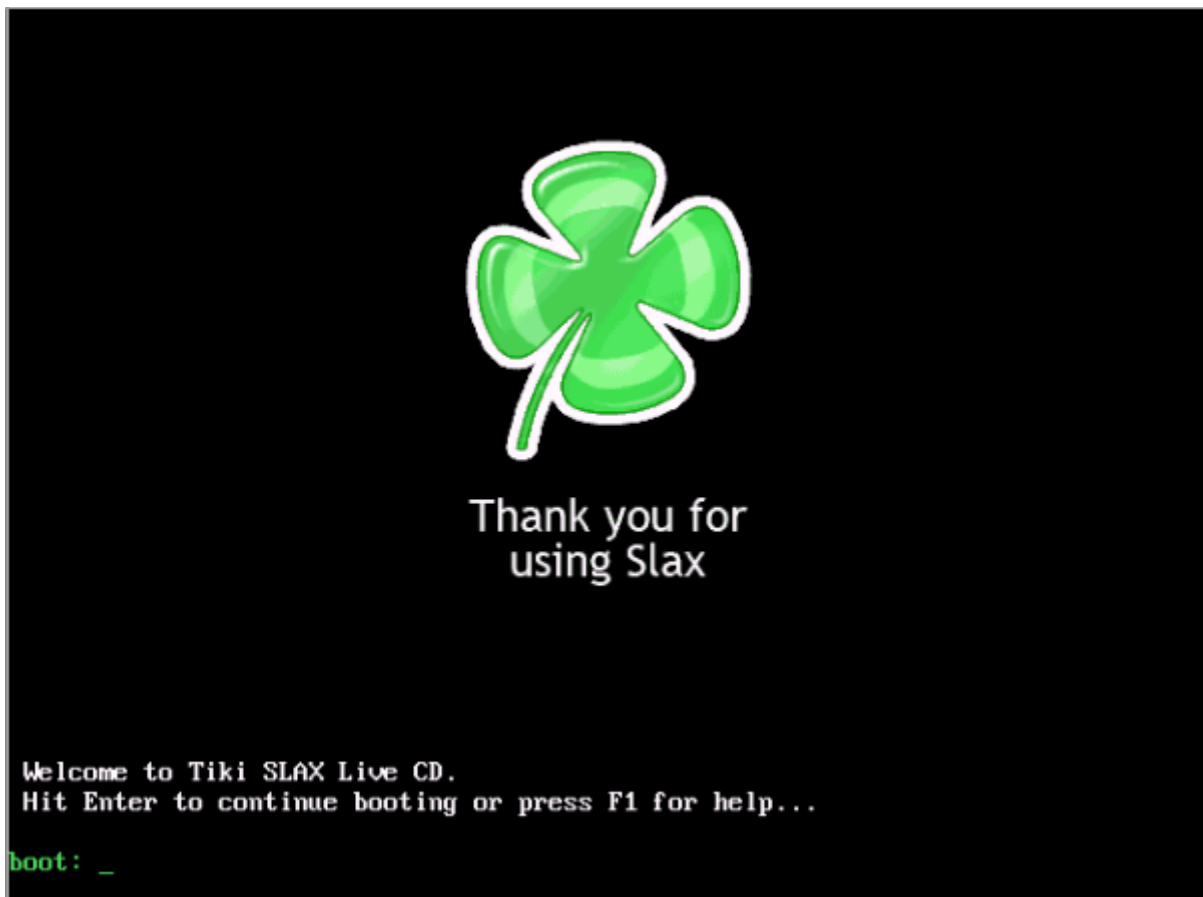
Still todo:

- Add link from tw installs to see the included videos and screencasts in the live CD

Comments:

- You need to download the .iso file, and burn a CD with it through your favorite .iso burning application (K3b, Brasero, Nero, Easy CD Recorder, ...). Then, insert the recorded CD on the CD drive and ensure that your computer is able to boot from the CD before booting from the hard drive. You might need to access your BIOS settings to change boot sequence, if the TikiLiveCD does not start automatically.
- Root user of the GNU/Linux system and its MySQL is:
 - **user:** root
password: toor
- Admin users on that tiki are:
 - **user:** root
password: toor
 - **user:** admin
password: nimda
(following the same convention of users and passwords as Slax does. Nevertheless, firefox was saved remembering admin password for easiness of testing on the Live CD)
- [TikiTests](#) can be recorded but not played back, due to missing packages on the base Slax 0.5x live CD where this TikiLiveCD is based upon.

Screenshots



00: After booting your computer from this CD, you'll see this welcome screen. Wait some seconds



Slax is starting
please wait...

```
* -> /modules/mozilla-firefox-2.0.0.11.mo
* -> /modules/netpbm_and_ppmtolss16_perl_script_1_0.mo
* -> /modules/p7zip_7_Zip_4_42.mo
* -> /modules/phpmyadmin.mo
* -> /modules/tiki20.mo
* -> /modules/z080814_keyboard_menu_mysql.mo
```

01: the Tiki Live CD will load automatically

```
=====
Welcome to SLAX Server Edition                                     5.1.8
=====

The system is up and running now.

Login as "root", with password "toor", both without quotes, lowercase.
If you're new to SLAX, visit http://www.slax.org/documentation for info.

After you login, try the following commands:

mc ..... to start Midnight Commander (edit/copy/move/create/delete files)
startx ... to run Xwindow system in VESA mode 1024x768 at 75Hz
flux ..... the same like startx but use FluxBox instead of KDE
xconf .... to autoconfigure your graphics card for better performance

Other commands you may find useful (for experts only!):

slax-install ... to install SLAX, use make_disk.sh script on SLAX CD
configsave/configrestore ... to save and restore all filesystem changes
filesnap .... to create special file for swapping RAM to your harddisk

When finished, use "poweroff" or "reboot" command and wait until it completes
=====

slax login:
```

02: Once fully loaded, you need to login as user 'root' and password 'toor' (see screen)

```
When finished, use
=====

slax login: root
Password: ****

root@slax:~#
```

03: Nowadays you are logged in, and you need to start the X windows

```
root@slax:~# startx
```

04: Type 'startx' and hit ENTER



05: The KDE (graphical windows) starts

If you cannot start the X windows properly, try executing 'xconf' on the terminal prior to attempting to start the X windows, to try to autoconfigure your graphics card for better performance on your system.

Note: This Live CD based on Slax 5.1.8 is known not to work on most recent monitors (flat panels, etc.).



06: Congratulations: TikiLiveCD is up & running nicely!

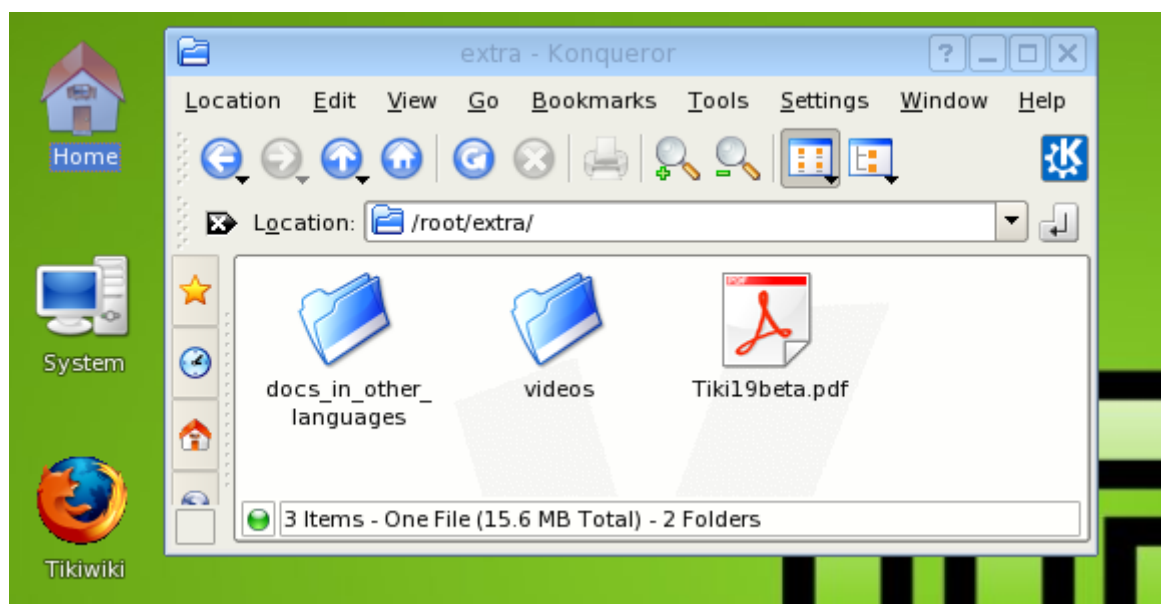


07: Once you click on the Tiki icon on the left of the screen, you'll start Tiki

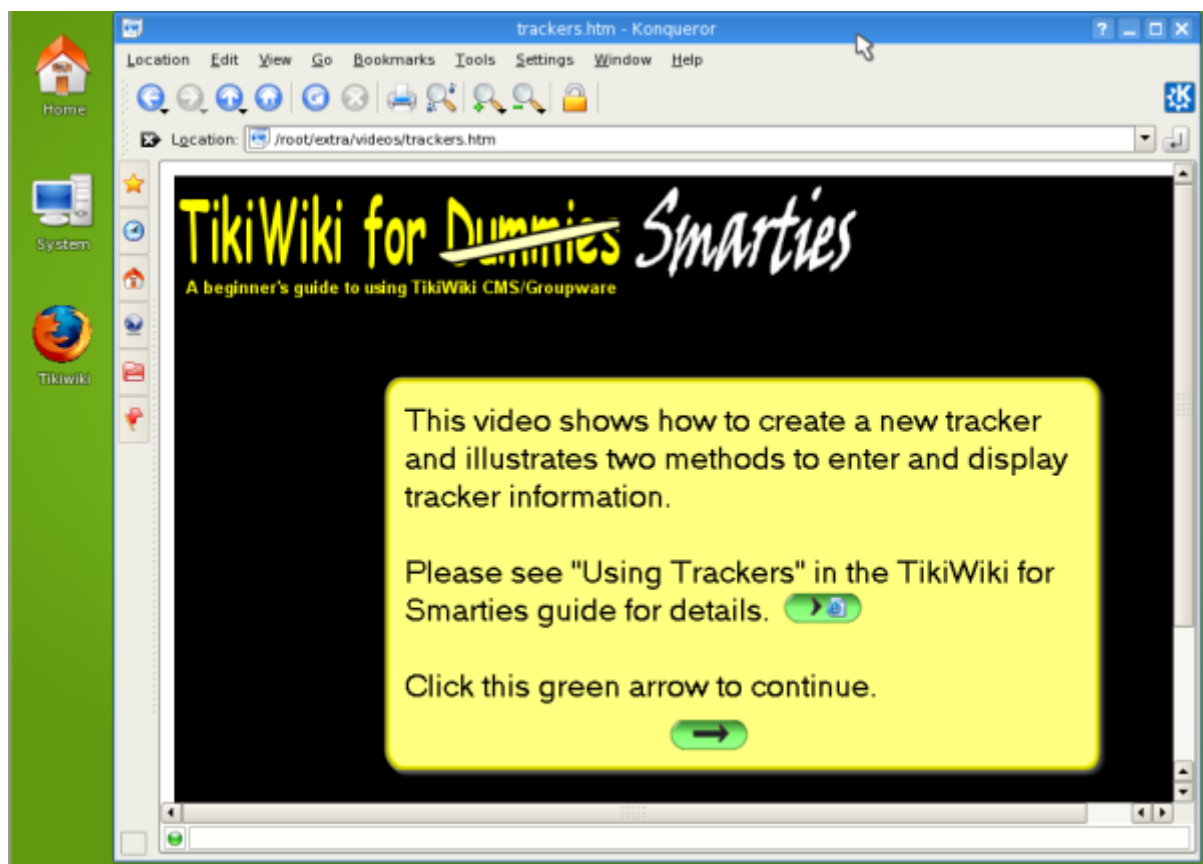
Note: Admin users on that tiki are:

- **user:** root
password: toor
- **user:** admin
password: nimda

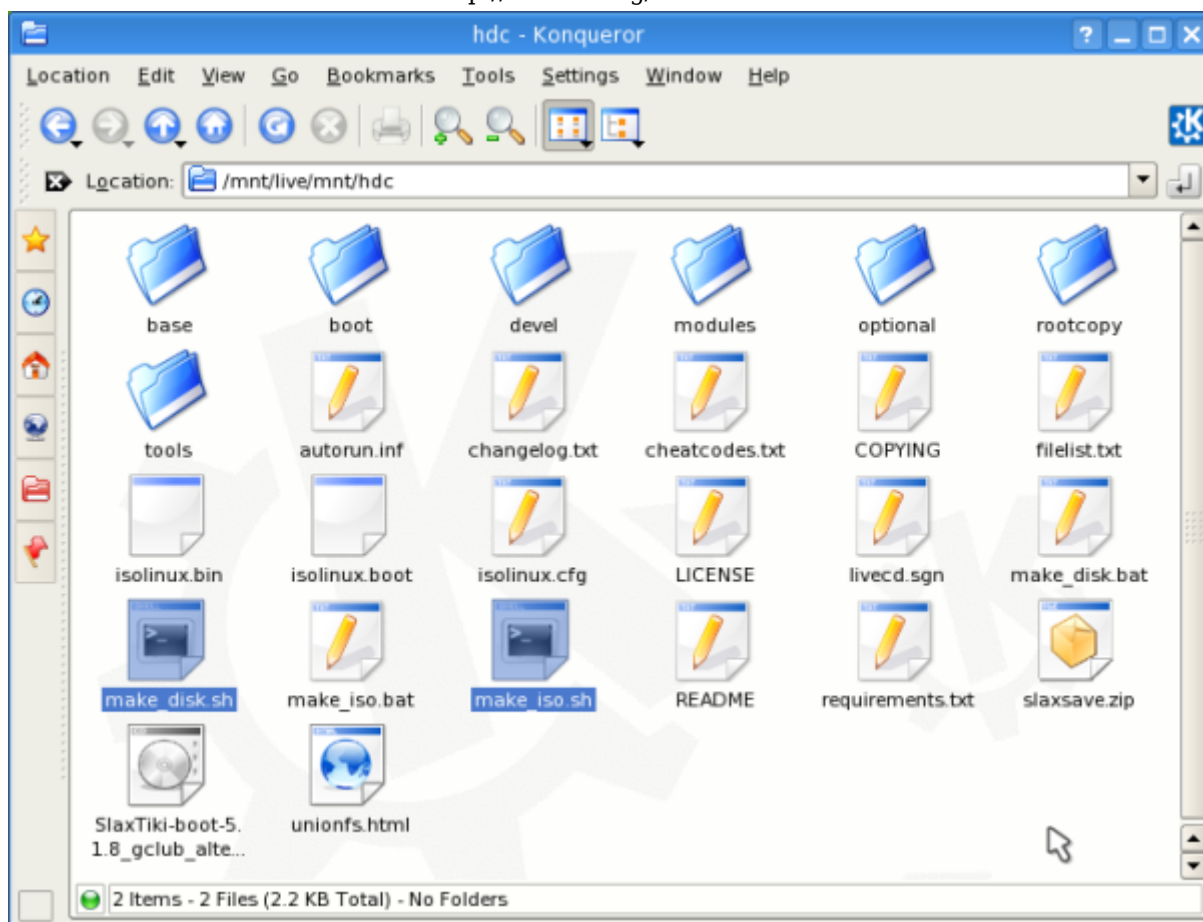
Moreover, Firefox was saved remembering the admin password for easiness of testing on the Live CD



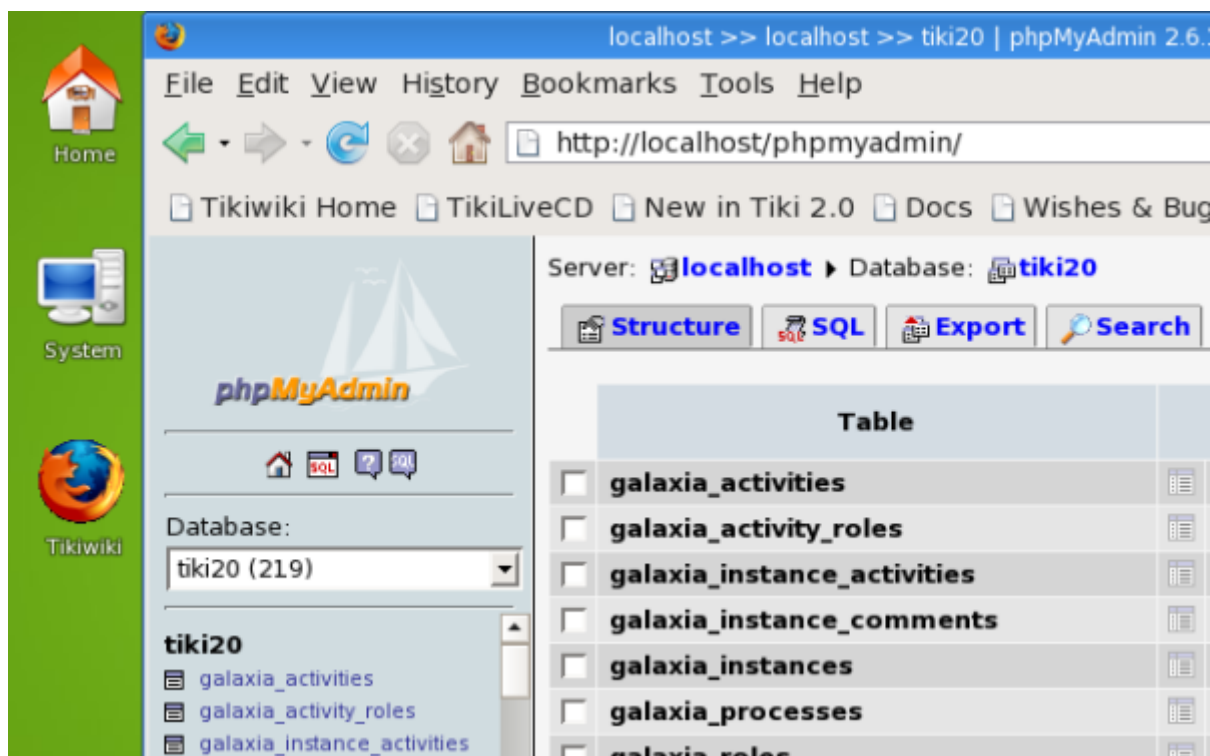
08: There are some other Extra goodies bundled, like manuals and video tutorials. Go to the Home icon on the upper left corner, and open folder Extra



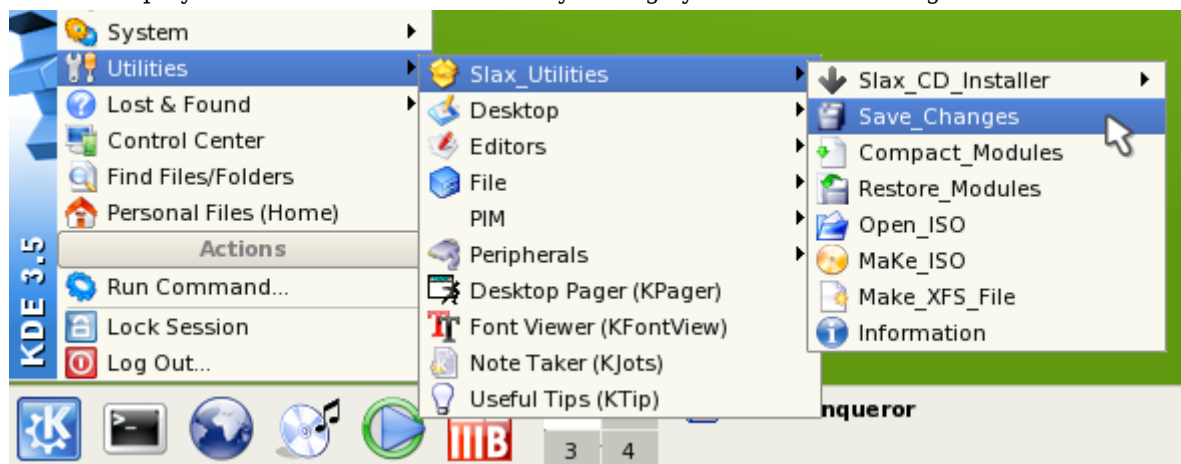
09: Example of one of the bundled videos and screencasts for viewing offline. See more online at <http://tikiwiki.org/TikiMovies>



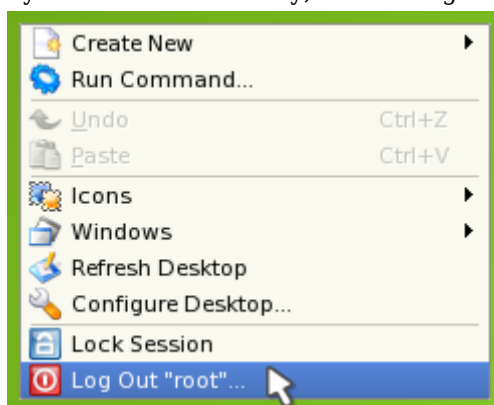
10: There also some utilities to allow creating a new iso file from this one, or to create a TikiLiveUSB stick out of this TikiLiveCD



10b: Phpmyadmin is also included to easily manage your database through a web interface



11: You can save your changes onto a new module .mo so that they can be recovered at new startup once you save them under your modules directory, when using a TikiLiveUSB



12: To exit, right click on the screen, click on Log Out root, and on the terminal window, type shutdown KnoppixTiki

The first one was KnoppixTiki, but until somebody updates it, it's not recommended because it contains an old copy of Tiki (dated from 13. November 2004).

For more information, see KnoppixTiki